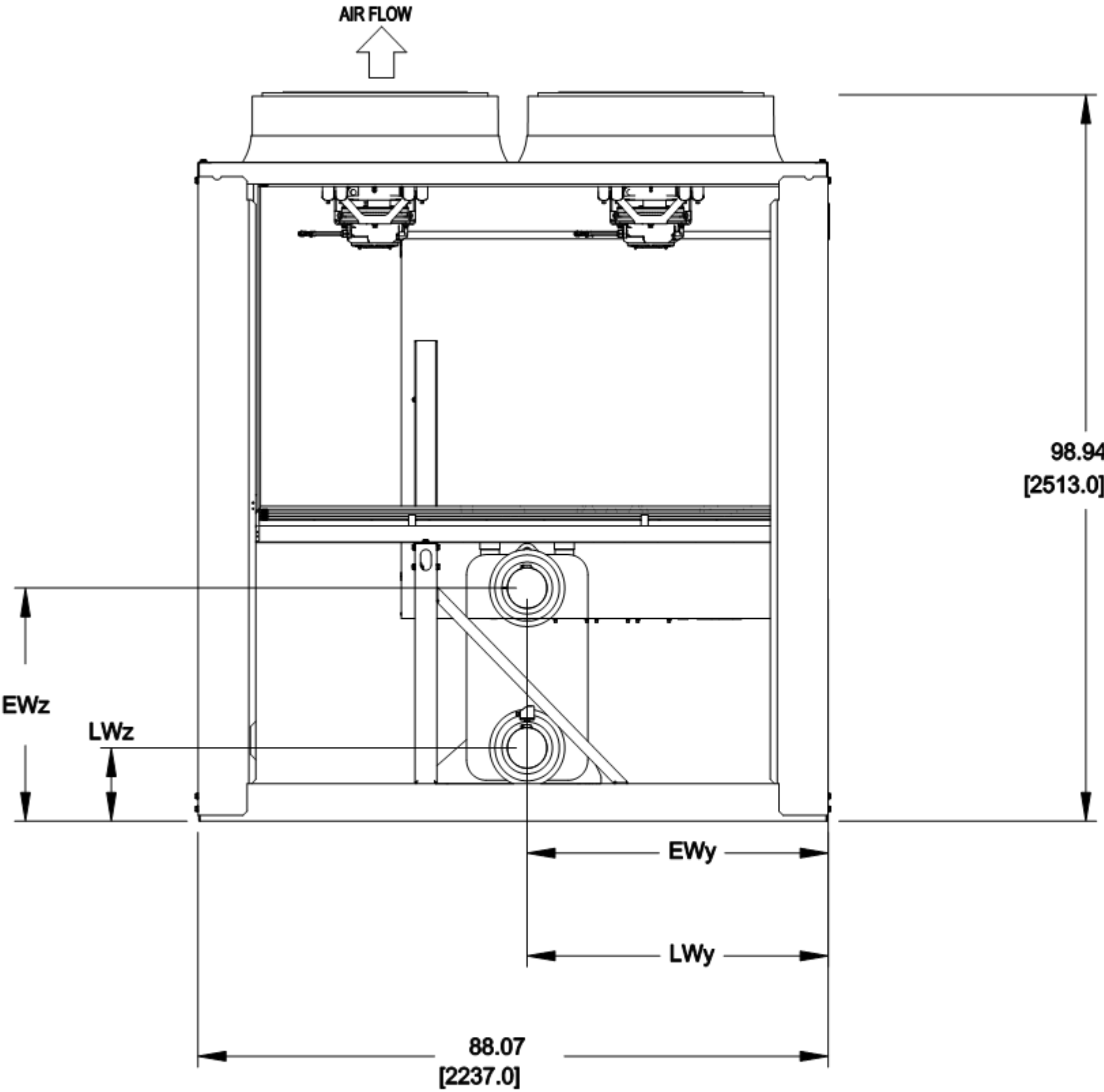


NOTES:
1. DIMENSIONS SHOWN ARE IN INCHES, DIMENSIONS IN [] ARE IN MM.
2. REFER TO GENERAL NOTES ON SHEET X.



NON-CONTROL PANEL END VIEW

CENTER OF GRAVITY INCH [MM]			ENTERING WATER (EW) INCH [MM]				LEAVING WATER (LW) INCH [MM]			MACHINE OPTIONS			
CGx	CGy	CGz	X ±.25	X DUAL PUMP ±.25	Y ±.25	Z ±.25	X ±.25	Y ±.25	Z ±.25	PUMP	DESUPERHEATER	COIL TYPE	EVAP TYPE
87.9 [2234]	36.1 [916]	41.2 [1046]	55.8 [1418]	-	42.1 [1069]	31.7 [806]	55.8 [1418]	42.1 [1069]	10.0 [253]	-	-	MCHX	BPHE
CONNECTION TYPE: 5" VICTAULIC													



P.O. BOX 4808, SYRACUSE, N.Y. 13221

JOB NAME:
job_name

BUYER:
buyer_name

SALES ENG.:
sales_eng

MODEL NO.:
model_number

JOB NO.:
job_number

P.O. NO.:
p.o._number

PREPARED BY:
prepared_by

ELECTRICAL
CHARACTERISTICS:
elect_char.

JOBSITE LOCATION:
job_location 1
job_location 2

SALES OFFICE:
sales_office

REFRIGERANT NO.:
refrig_no

NOTES:
notes_1
notes_2

30RC 152T STD
MACHINE ASSEMBLY
NON-CONTROL PANEL
END VIEW

DATE: 10/25/2023

REVISION: _rev#

THIS DOCUMENT IS THE PROPERTY OF CARRIER CORP. AND IS DELIVERED UPON THE EXPRESS CONDITION THAT THE CONTENTS WILL NOT BE DISCLOSED OR USED WITHOUT CARRIER CORP. WRITTEN CONSENT.

SUBMISSION OF THESE DWG'S. OR DOCUMENTS DOES NOT CONSTITUTE PART PERFORMANCE OR ACCEPTANCE OF CONTRACT.

CARRIER DWG # 30RC-152-STD-NCP

REV. - SHT 00F 01

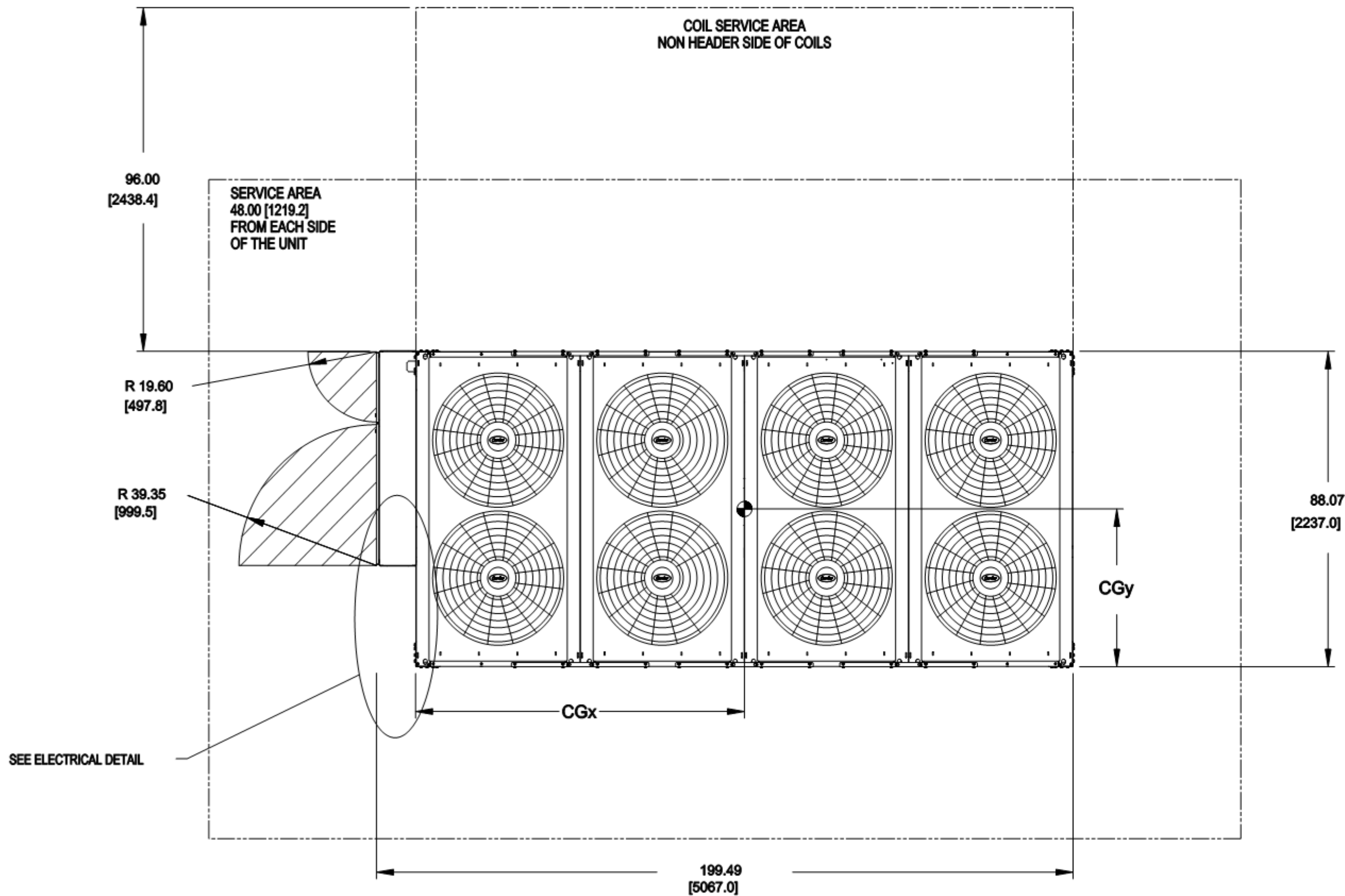
DATE: 03/02/2023

SUPERSEDES DWG. DATED:
-

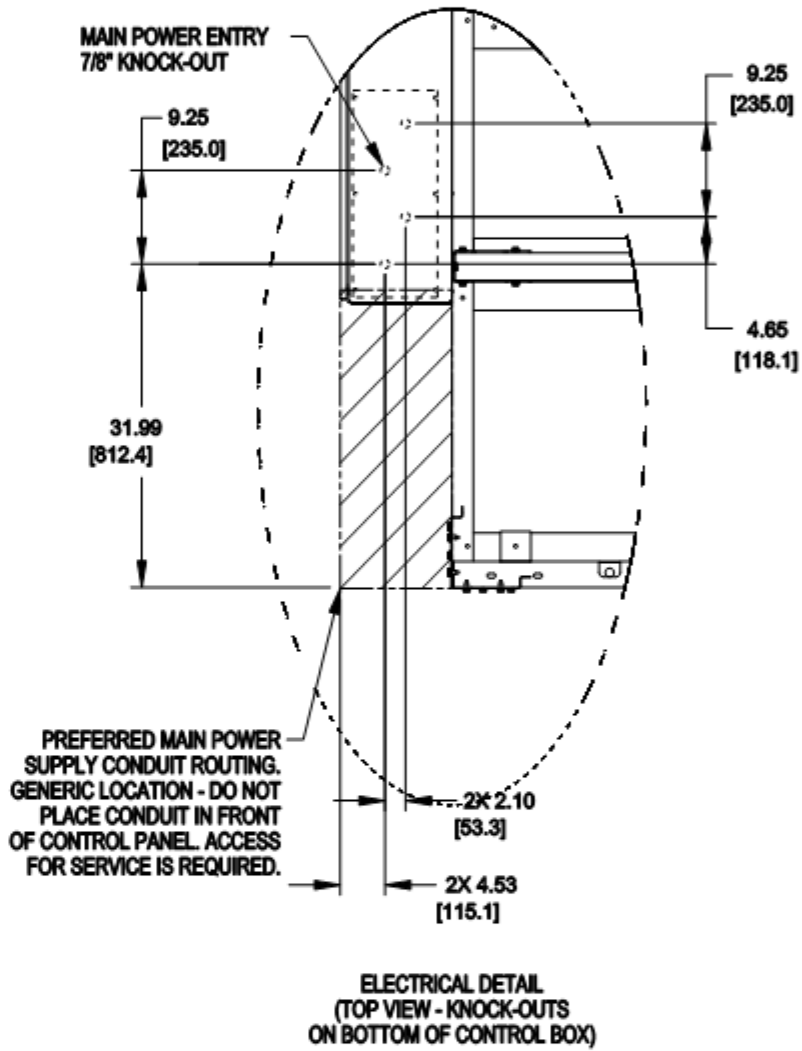
30RC

SHT 00F 6

NOTES:
1. DIMENSIONS SHOWN ARE IN INCHES, DIMENSIONS IN [] ARE IN MM.
2. REFER TO GENERAL NOTES ON SHEET X.



PLAN VIEW



CENTER OF GRAVITY INCH [MM]			ENTERING WATER (EW) INCH [MM]				LEAVING WATER (LW) INCH [MM]				MACHINE OPTIONS			
CGx	CGy	CGz	X ±.25	DUAL PUMP ±.25	Y ±.25	Z ±.25	X ±.25	Y ±.25	Z ±.25		PUMP	DESUPERHEATER	COIL TYPE	EVAP TYPE
87.9 [2234]	36.1 [916]	41.2 [1046]	55.8 [1418]	-	42.1 [1069]	31.7 [806]	55.8 [1418]	42.1 [1069]	10.0 [253]	-	-	-	MCHX	BPHE
CONNECTION TYPE: 5" VICTAULIC														



P.O. BOX 4808, SYRACUSE, N.Y. 13221

JOB NAME:
job_name

BUYER:
buyer_name

SALES ENG.:
sales_eng

MODEL NO.:
model_number

JOB NO.:
job_number

P.O. NO.:
p.o._number

PREPARED BY:
prepared_by

ELECTRICAL
CHARACTERISTICS:
elect_char.

JOBSITE LOCATION:
job_location 1
job_location 2

SALES OFFICE:
sales_office

REFRIGERANT NO.:
refrig_no

NOTES:
notes_1
notes_2

30RC 152T STD
MACHINE ASSEMBLY
PLAN VIEW

DATE: 10/25/2023

REVISION: _rev#

THIS DOCUMENT IS THE PROPERTY OF CARRIER CORP. AND IS DELIVERED UPON THE EXPRESS CONDITION THAT THE CONTENTS WILL NOT BE DISCLOSED OR USED WITHOUT CARRIER CORP. WRITTEN CONSENT.

SUBMISSION OF THESE DWG'S. OR DOCUMENTS DOES NOT CONSTITUTE PART PERFORMANCE OR ACCEPTANCE OF CONTRACT.

CARRIER DWG # 30RC-152-STD-P

REV. - SHT 01 OF 01

DATE: 02/23/2023

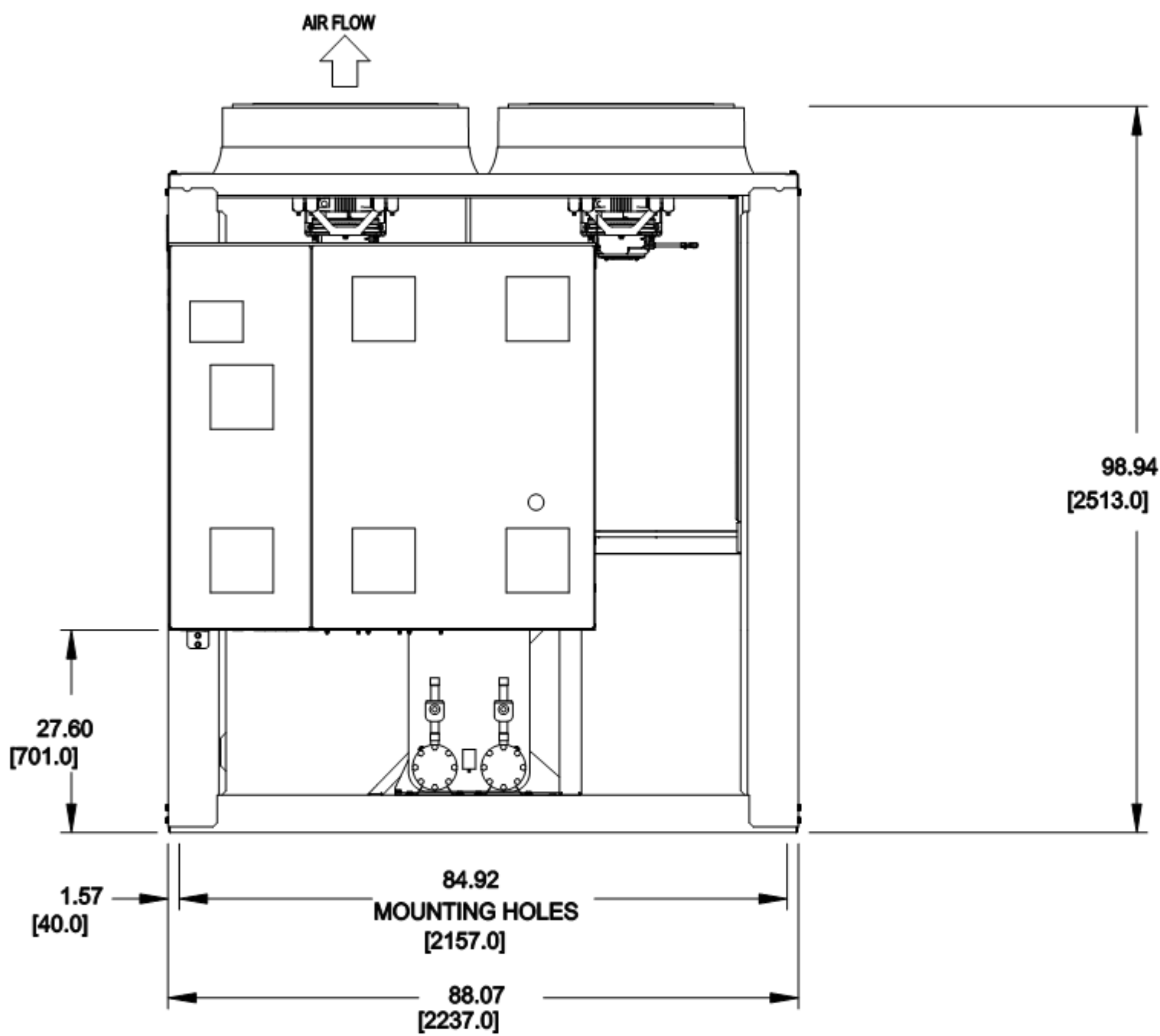
SUPERSEDES DWG. DATED:

30RC

SHT 3 OF 6

<div>NOTES:</div> <div>1. UNIT MUST HAVE CLEARANCES AS FOLLOWS: TOP- DO NOT RESTRICT. SIDES AND END- 6' FROM SOLID SURFACE. FOR AIRFLOW SIDE- 8' REQUIRED FOR COIL SERVICE AREA. IF MULTIPLE UNITS ARE INSTALLED AT THE SAME SITE, A MINIMUM SEPERATION OF 10FT (3M) BETWEEN THE SIDES OF THE MACHINES IS REQUIRED TO MAINTAIN PROPER AIRFLOW.</div> <div>2. FACTORY WIRING IS IN ACCORDANCE WITH UL 60335-2-40 STANDARDS. FIELD MODIFICATIONS OR ADDITIONS MUST BE IN COMPLIANCE WITH ALL APPLICABLE CODES.</div> <div>3. WIRING FOR MAIN FIELD SUPPLY MUST BE RATED 75C MINIMUM. USE COPPER FOR ALL UNITS.</div> <div>4. TEMPERATURE RELIEF DEVICES ARE LOCATED ON FILTER/DRYERS, SUCTION MANIFOLDS, AND LIQUID LINES (SOMETIMES). THESE DEVICES HAVE 3/8" SAE FLARE CONNECTION. DO NOT CAP OR OTHERWISE OBSTRUCT TEMPERATURE RELIEF DEVICES.</div> <div>5. PRESSURE RELIEF DEVICES ARE LOCATED ON THE LIQUID LINES (SOMETIMES) AND SUCTION LINES (SOMETIMES). THE DEVICES ON THE LIQUID LINES HAVE 3/8" SAE FLARE CONNECION. THE DEVICES ON THE SUCTION LINES HAVE 1/4" SAE FLARE CONNECION. DO NOT CAP OR OTHERWISE OBSTRUCT PRESSURE RELIEF DEVICES.</div> <div>6. DIMENSIONS SHOWN ARE IN INCHES, DIMENSIONS IN [] ARE IN MM.</div> <div>7. ENTERING WATER DIMENSION IN X-DIRECTION CHANGES ON CERTAIN DUAL PUMP MODELS. CHECK "X DUAL PUMP" SECTION OF TABLE FOR VARIANCE FROM "X TABLE"</div>	<div><div><div><div><div></div><div>Carrier</div></div><div><div>P.O. BOX 4806, SYRACUSE, N.Y. 13221</div></div></div></div></div>
	<div>JOB NAME:</div> <div>job_name</div>
	<div>BUYER:</div> <div>buyer_name</div>
	<div>SALES ENG.:</div> <div>sales_eng</div>
	<div>MODEL NO.:</div> <div>model_number</div>
	<div>JOB NO.:</div> <div>job_number.</div>
	<div>P.O. NO.:</div> <div>p.o._number</div>
	<div>PREPARED BY:</div> <div>prepared_by</div>
	<div>ELECTRICAL CHARACTERISTICS:</div> <div>elect_char</div>
	<div>JOBSITE LOCATION:</div> <div>Job_Location 1</div> <div>Job_Location 2</div>
	<div>SALES OFFICE:</div> <div>sales_office</div>
	<div>REFRIGERANT NO.:</div> <div>refrig_no</div>
	<div>NOTES:</div> <div>Notes_1</div> <div>Notes_2</div>
	<div>30RC 152T STD MACHINE ASSEMBLY NOTES</div>
	<div>DATE: 10/25/2023</div>
<div>REVISION: _rev#</div>	
<div>THIS DOCUMENT IS THE PRO- PERTY OF CARRIER CORP. AND IS DELIVERED UPON THE EXPRESS CONDITION THAT THE CONTENTS WILL NOT BE DIS- CLOSED OR USED WITHOUT CARRIER CORP. WRITTEN CONSENT.</div> <div>SUBMISSION OF THESE DWG'S. OR DOCUMENTS DOES NOT CONSTITUTE PART PERFOR- MANCE OR ACCEPTANCE OF CONTRACT.</div>	
<div>CARRIER DWG # 30RC-152-STD-N</div> <div>REV. _ SHT 00F 01</div> <div>DATE: 03/02/2023</div> <div>SUPERSEDES DWG. DATED: _</div>	
<div>30RC</div>	
<div>SHT 00F 6</div>	

NOTES:
1. DIMENSIONS SHOWN ARE IN INCHES, DIMENSIONS IN [] ARE IN MM.
2. REFER TO GENERAL NOTES ON SHEET X.



CONTROL PANEL END VIEW

CENTER OF GRAVITY INCH [MM]			ENTERING WATER (EW) INCH [MM]				LEAVING WATER (LW) INCH [MM]			MACHINE OPTIONS			
CGx	CGy	CGz	X ±.25	X DUAL PUMP ±.25	Y ±.25	Z ±.25	X ±.25	Y ±.25	Z ±.25	PUMP	DESUPERHEATER	COIL TYPE	EVAP TYPE
87.9 [2234]	36.1 [916]	41.2 [1046]	55.8 [1418]	-	42.1 [1069]	31.7 [806]	55.8 [1418]	42.1 [1069]	10.0 [253]		-	MCHX	BPHE
CONNECTION TYPE: 5" VICTAULIC													



P.O. BOX 4808, SYRACUSE, N.Y. 13221

JOB NAME:
job_name

BUYER:
buyer_name

SALES ENG.:
sales_eng

MODEL NO.:
model_number

JOB NO.:
job_number

P.O. NO.:
p.o._number

PREPARED BY:
prepared_by

ELECTRICAL
CHARACTERISTICS:
elect_char.

JOBSITE LOCATION:
job_location 1
job_location 2

SALES OFFICE:
sales_office

REFRIGERANT NO.:
refrig_no

NOTES:
notes_1
notes_2

30RC 152T STD
MACHINE ASSEMBLY
CONTROL PANEL END VIEW

DATE: 10/25/2023

REVISION: _rev#

THIS DOCUMENT IS THE PRO-
PERTY OF CARRIER CORP.
AND IS DELIVERED UPON THE
EXPRESS CONDITION THAT THE
CONTENTS WILL NOT BE DIS-
CLOSED OR USED WITHOUT
CARRIER CORP. WRITTEN
CONSENT.

SUBMISSION OF THESE DWG'S.
OR DOCUMENTS DOES NOT
CONSTITUTE PART PERFOR-
MANCE OR ACCEPTANCE OF
CONTRACT.

CARRIER DWG # 30RC-152-STD-CP

REV. - SHT 00F 06

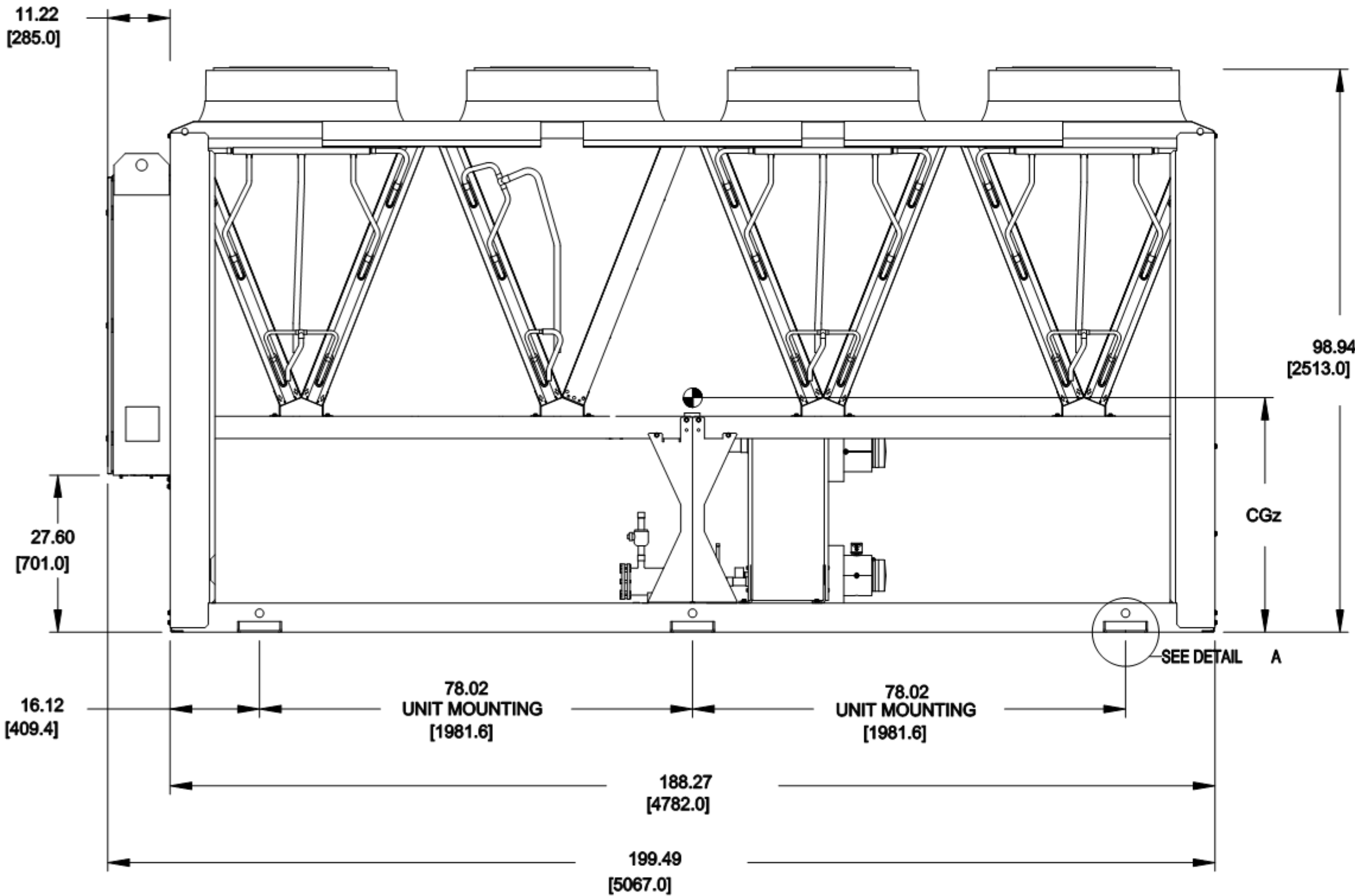
DATE: 03/02/2023

SUPERSEDES DWG. DATED:
-

30RC

SHT 10F 6

NOTES:
1. DIMENSIONS SHOWN ARE IN INCHES, DIMENSIONS IN [] ARE IN MM.
2. REFER TO GENERAL NOTES ON SHEET X.



FRONT VIEW

CENTER OF GRAVITY INCH [MM]			ENTERING WATER (EW) INCH [MM]				LEAVING WATER (LW) INCH [MM]			MACHINE OPTIONS			
CGx	CGy	CGz	X ±.25	X DUAL PUMP ±.25	Y ±.25	Z ±.25	X ±.25	Y ±.25	Z ±.25	PUMP	DESUPERHEATER	COIL TYPE	EVAP TYPE
87.9 [2234]	36.1 [916]	41.2 [1046]	55.8 [1418]	-	42.1 [1069]	31.7 [806]	55.8 [1418]	42.1 [1069]	10.0 [253]	-	-	MCHX	BPHE
CONNECTION TYPE: 5" VICTAULIC													



P.O. BOX 4808, SYRACUSE, N.Y. 13221

JOB NAME:
job_name

BUYER:
buyer_name

SALES ENG.:
sales_eng

MODEL NO.:
model_number

JOB NO.:
job_number

P.O. NO.:
p.o_number

PREPARED BY:
prepared_by

ELECTRICAL
CHARACTERISTICS:
elect_char.

JOBSITE LOCATION:
job_location 1
job_location 2

SALES OFFICE:
sales_office

REFRIGERANT NO.:
refrig_no

NOTES:
notes_1
notes_2

30RC 152T STD
MACHINE ASSEMBLY
FRONT VIEW

DATE: 10/25/2023

REVISION: _rev#

THIS DOCUMENT IS THE PROPERTY OF CARRIER CORP. AND IS DELIVERED UPON THE EXPRESS CONDITION THAT THE CONTENTS WILL NOT BE DISCLOSED OR USED WITHOUT CARRIER CORP. WRITTEN CONSENT.

SUBMISSION OF THESE DWG'S. OR DOCUMENTS DOES NOT CONSTITUTE PART PERFORMANCE OR ACCEPTANCE OF CONTRACT.

CARRIER DWG # 30RC-152-STD-F

REV. - SHT 00F 01

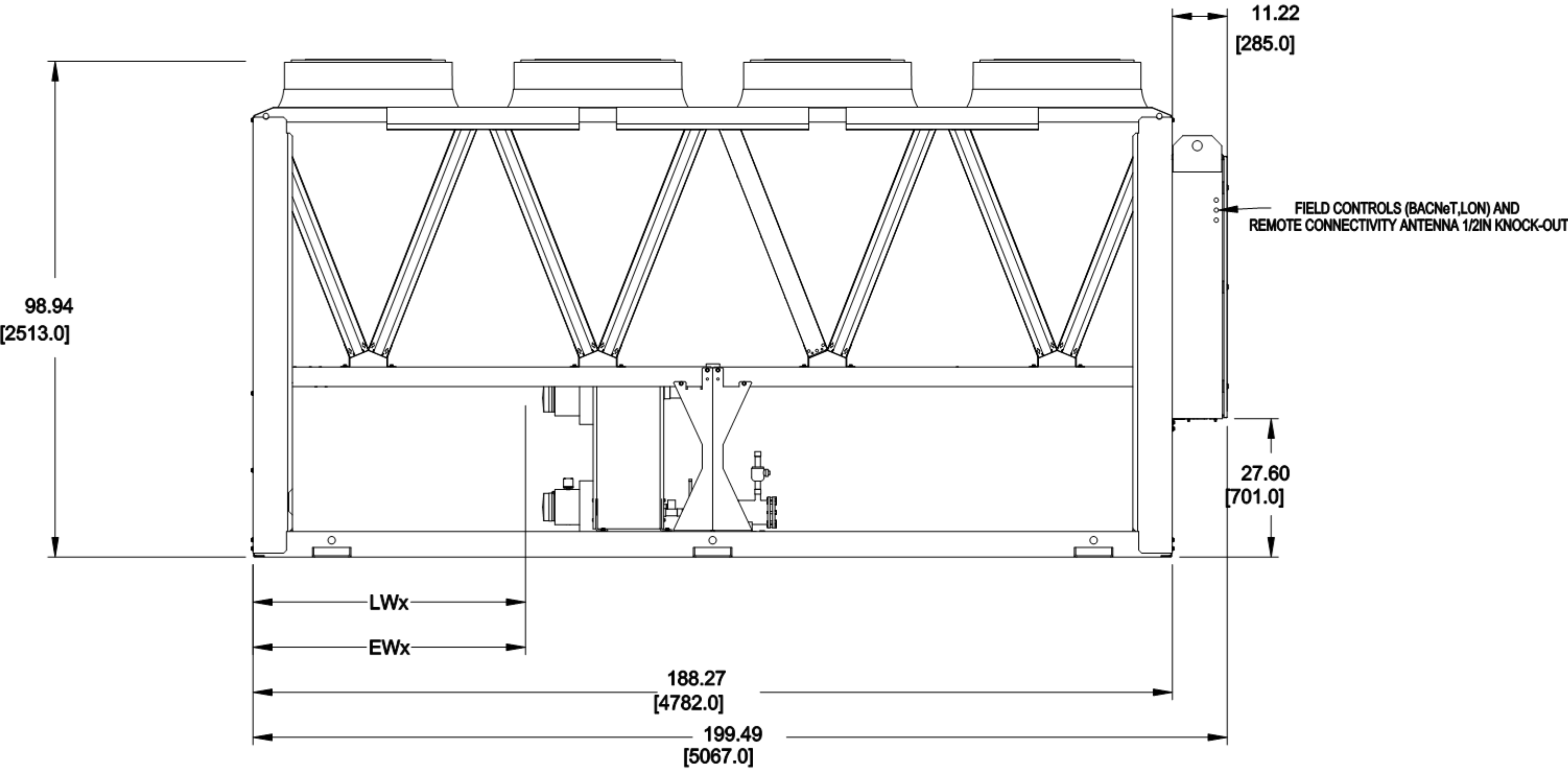
DATE: 03/02/2023

SUPERSEDES DWG. DATED:

30RC

SHT 50F 6

NOTES:
1. DIMENSIONS SHOWN ARE IN INCHES, DIMENSIONS IN [] ARE IN MM.
2. REFER TO GENERAL NOTES ON SHEET X.



REAR VIEW

CENTER OF GRAVITY INCH [MM]			ENTERING WATER (EW) INCH [MM]				LEAVING WATER (LW) INCH [MM]			MACHINE OPTIONS			
CGx	CGy	CGz	X ±.25	X DUAL PUMP ±.25	Y ±.25	Z ±.25	X ±.25	Y ±.25	Z ±.25	PUMP	DESUPERHEATER	COIL TYPE	EVAP TYPE
87.9 [2234]	36.1 [916]	41.2 [1046]	55.8 [1418]	-	42.1 [1069]	31.7 [806]	55.8 [1418]	42.1 [1069]	10.0 [253]	-	-	MCHX	BPHE
CONNECTION TYPE: 5" VICTAULIC													



P.O. BOX 4808, SYRACUSE, N.Y. 13221

JOB NAME:
job_name

BUYER:
buyer_name

SALES ENG.:
sales_eng

MODEL NO.:
model_number

JOB NO.:
job_number

P.O. NO.:
p.o._number

PREPARED BY:
prepared_by

ELECTRICAL
CHARACTERISTICS:
elect_char.

JOBSITE LOCATION:
job_location 1
job_location 2

SALES OFFICE:
sales_office

REFRIGERANT NO.:
refrig_no

NOTES:
notes_1
notes_2

30RC 152T STD
MACHINE ASSEMBLY
REAR VIEW

DATE: 10/25/2023

REVISION: _rev#

THIS DOCUMENT IS THE PROPERTY OF CARRIER CORP. AND IS DELIVERED UPON THE EXPRESS CONDITION THAT THE CONTENTS WILL NOT BE DISCLOSED OR USED WITHOUT CARRIER CORP. WRITTEN CONSENT.

SUBMISSION OF THESE DWG'S. OR DOCUMENTS DOES NOT CONSTITUTE PART PERFORMANCE OR ACCEPTANCE OF CONTRACT.

CARRIER DWG # 30RC-152-STD-R

REV. - SHT 00F 01

DATE: 03/02/2023

SUPERSEDES DWG. DATED:
-

30RC

SHT 40F 6